

## Ranger Mobile Computer



### Rugged In-Vehicle Computing for Every Fleet

AssetWorks Ranger is a tough, compact computer that fits in the vehicle to streamline mobile workforce management by connecting the fleet and the office. Ranger supports voice and data communications, automatic vehicle location, electronic work orders, electronic driver logs/HOS, and vehicle telemetry, all fully integrated on a single, powerful platform.

“The money we invested in this technology was expected to be returned in three years, and it has been returned in one. That isn't even accounting for the overtime hours we're saving.”

- Holly Goulard, Controller, Keystone Excavating Ltd.

### ROI You Can Count On

- Faster dispatching
- Lower fuel costs
- Improved response times to customer calls
- Better vehicle maintenance
- Lower staffing requirements
- Improved communications between office staff and field operators



- Wireless Data Modem
- 50 Channel GPS Receiver
- Ethernet (M8)9
- Wireless Voice/Cell Phone
- 3 Track Mag Stripe Reader
- Flash Hard Drive
- Telemetry Inputs

# Ranger Mobile Computer

## Connecting Field Operators Instantly

Ranger is built to last in the harsh vehicle environment and rated MIL STD 810F for shock and vibration. Ranger's internal antennas are tamper-proof, take up less space in the vehicle and lead to simpler, more cost-effective installation.

## Automated Work Order Management

Ranger facilitates the real-time electronic dispatching and management of work orders. The automatic capture of login times, job completion details, and more eliminates multiple points of data entry. Workflow is streamlined and costs are reduced.

## Driver Activities

All driver activities are tracked—from login and job details, to logoff—for a faster and more accurate payroll and billing process with fewer overtime hours.

## Field Operator Safety

Ranger can work as an electronic on-board recorder (EOBR) to easily manage Hours of Service (HOS) requirements and provides lone worker safety check-in functionality.

## In-Vehicle Navigation

Up-to-date maps and turn-by-turn voice prompts help drivers quickly reach their destination, improving response times and lowering fuel consumption.

## Vehicle Telematics

Ranger collects GPS-based vehicle tracking data, but then goes further to deliver even more. It collects and reports on driver behavior such as speeding, excessive idling, and hard braking and turning, helping to improve fuel efficiency and increase safety. Real-time vehicle diagnostic data is captured, making fleet maintenance programs more efficient.

## Two-way Communication

Real-time electronic communication connects drivers and the office. As well, Ranger's integrated cell phone capabilities provide a voice solution for your fleet.

## Ranger Specifications

- 6.5" VGA TFT Color Display
- Touchscreen
- 50-Channel GPS Receiver
- Bluetooth 2.1
- 802.11 b/g/n Wi-Fi
- Wireless Data Modem
- Wireless Voice/Cell Phone
- 256 MB DDR SDRAM
- 256 MB FLASH Memory
- Telemetry Inputs (J1708, J1939)
- Audio Inputs/Outputs
- G-Force sensor (accelerometer)
- Internal antennas

## Integrated Technologies

### Mobile Device Management

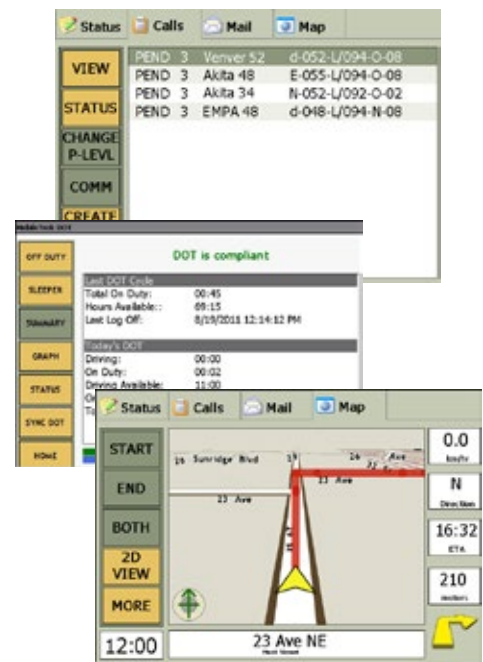
#### ■ XMobile Manager

For over-the-air programming (OTAP), diagnostics and troubleshooting of Ranger.

### In-vehicle Software

#### ■ Mobility

Intuitive software platform for Ranger that automates workflow.



AssetWORKS

Wayne, PA | Spokane, WA | La Jolla, CA | Calgary, AB

www.assetworks.com | 403.777.3760